



PMHB

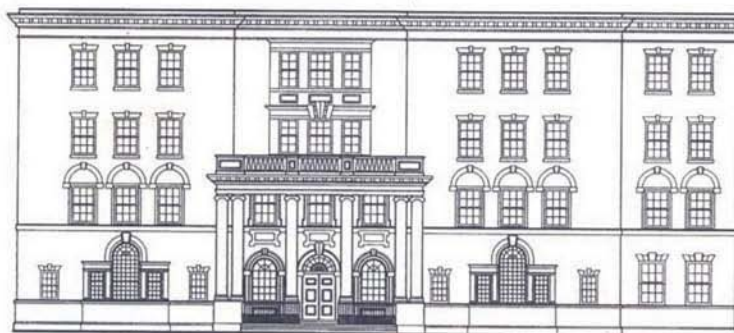
The Pennsylvania Magazine of History and Biography

presents

a Special Anniversary Issue

celebrating 175 Years of

The Historical Society of Pennsylvania



PUBLISHED SINCE 1877 BY
THE HISTORICAL SOCIETY OF PENNSYLVANIA

BOOK REVIEWS

MERRELL, <i>Into the American Woods: Negotiators on the Pennsylvania Frontier</i> , by Jon W. Parmenter	203
WOKECK, <i>Trade in Strangers: The Beginnings of Mass Migration to North America</i> , by Russell R. Menard	205
BELL, <i>Patriot Improvers: Biographical Sketches of Members of the American Philosophical Society, Volume One: 1743-1768</i> , by Joseph S. Foster	206
WALTERS, <i>Benjamin Franklin and His Gods</i> , by J. A. Leo Lemay	208
CAMPBELL, <i>Recovering Benjamin Franklin: An Exploration of a Life of Science and Service, 1780</i> , by J. A. Leo Lemay	208
OBERG, ET AL, <i>The Papers of Benjamin Franklin. Volume 34: November 16, through April 30, 1781</i> , by J. A. Leo Lemay	208
RASMUSSEN and TILTON, <i>George Washington: The Man Behind the Myths</i> , by John Ferling	212
GRIZZARD, <i>The Papers of George Washington: Revolutionary War Series. Volume 8: January-March 1777</i> , by Benjamin H. Newcomb	214
CHASE, <i>The Papers of George Washington: Revolutionary War Series. Volume 9: March-June 1777</i> , by Benjamin H. Newcomb	214
TISE, <i>The American Counterrevolution: A Retreat from Liberty, 1783-1800</i> , by Owen S. Ireland	217
NICOLS, <i>Indians in the United States and Canada: A Comparative History</i> , by J. Frederick Fausz	220
ISENBERG, <i>Sex and Citizenship in Antebellum America</i> , by Elizabeth R. Varon	222
SIMPSON and BERLIN, <i>Sherman's Civil War: Selected Correspondence of William T. Sherman, 1860-1865</i> , by Daniel Feller	223
NIVEN, <i>The Salmon P. Chase Papers. Volume 5: Correspondence, 1865-1873</i> , by Stephen Middleton	225
TRAXEL, <i>1898: The Birth of the American Century</i> , by John L. Thomas	227
JACOB, <i>Testament to Union: Civil War Monuments in Washington, D.C.</i> , by Lois Goldreich Marcus	228
CONN, <i>Museums and Intellectual Life, 1876-1926</i> , by Gary Kulik	231
WEST, <i>Domesticating History: The Political Origins of America's House Museums</i> , by Barbara J. Howe	234
LORD, <i>Henry F. du Pont and Winterthur: A Daughter's Portrait</i> , by Ian M. G. Quimby	235
HOROWITZ and MOHUN, <i>His and Hers: Gender, Consumption, and Technology</i> , by Nina E. Lerman	238

THE
PENNSYLVANIA
MAGAZINE
OF HISTORY AND BIOGRAPHY

VOLUME CXXIV

January/April 2000

NOS. 1/2

EDITORIAL

5

FROM "FRONTIER" TO CENTER CITY: THE EVOLUTION
OF THE NEIGHBORHOOD OF THE HISTORICAL
SOCIETY OF PENNSYLVANIA

George E. Thomas 7

"THE FIREPROOF": THE SOCIETY'S BUILDING

Susan Stitt 43

WORKING A "GOLD MINE": SCHOLARS OF EARLY
AMERICA AND THE MANUSCRIPT COLLECTIONS
AT THE HISTORICAL SOCIETY OF
PENNSYLVANIA

John K. Alexander 103

EVIDENCE OF PLACE: RESOURCES DOCUMENTING THE
PHILADELPHIA AREA'S ARCHITECTURAL PAST

Jeffrey A. Cohen 145

BOOK REVIEWS

203

© 2000, by The Historical Society of Pennsylvania. All rights reserved.
(ISSN 0031-4587)

THE PENNSYLVANIA MAGAZINE OF HISTORY AND BIOGRAPHY is published each quarter in January, April, July, and October by THE HISTORICAL SOCIETY OF PENNSYLVANIA, 1300 Locust Street, Philadelphia, PA 19107-5699. **Yearly subscriptions:** individual, \$30.00; institutional, \$40.00. **Back issues:** Selected issues and annual bound volumes are available. Query editors for availability and price. **Authorization for academic photocopying:** Copyright Clearance Center, Inc., Academic Permissions Service, 222 Rosewood Drive, Danvers, MA 01923. **Submissions:** All communications should be addressed to the editor. Email may be sent to pmhb@aol.com. Articles submitted for publication should be sent to the editor in triplicate and should conform to *The Chicago Manual of Style*. Manuscripts will not be returned unless accompanied by a stamped, self-addressed envelope. Please send SASE for submission guidelines. The editor does not assume responsibility for statements of fact or of opinion made by the contributors.

N.B. THE PENNSYLVANIA MAGAZINE OF HISTORY AND BIOGRAPHY is currently published three time a year, with the January and April issues (nos. 1 and 2) appearing as a combined issue.

Editorial Advisory Committee

RICHARD R. BEEMAN
University of Pennsylvania

RICHARD S. DUNN
*McNeil Center for Early
American Studies*

J. WILLIAM FROST
Swarthmore College

JACK P. GREENE
Johns Hopkins University

EMMA JONES LAPSANSKY
Haverford College

J.A. LEO LEMAY
University of Delaware

RANDALL M. MILLER
Saint Joseph's University

CARLA MULFORD
Pennsylvania State University

GARY B. NASH
*University of California,
Los Angeles*

JEAN R. SODERLUND
Lehigh University

DAMIE STILLMAN
University of Delaware

DELL UPTON
University of California, Berkeley

RUSSELL F. WEIGLEY
Temple University

STEPHANIE GRAUMAN WOLF
*McNeil Center for Early
American Studies*

Editor

IAN M. G. QUIMBY

Assistant Editor

JAMES E. WHEATLEY

Contributors

JOHN K. ALEXANDER is professor of history at the University of Cincinnati. In addition to numerous publications on Pennsylvania topics, he is the author of *The Selling of the Constitutional Convention: A History of News Coverage* (1990) and a forthcoming book: *Samuel Adams: America's Revolutionary Politician*.

JEFFREY A. COHEN is an architectural historian teaching in the Growth and Structure of Cities Program at Bryn Mawr College. He is coauthor of *Architectural Drawings of Benjamin Henry Latrobe* (2 vols., 1995); *Eastern State Penitentiary: Crucible of Good Intentions* (1994); *Frank Furness: The Complete Works* (1991, 1996); and *Drawing Toward Building: Philadelphia Architectural Graphics, 1732-1986* (1986).

SUSAN STITT, president of the Historical Society from 1990 through 1998, studied the Society's building to inform institutional planning and to satisfy her own curiosity. This is her second article on the Society's history, and third on architectural history.

GEORGE E. THOMAS is a Philadelphia historian and saltwater fly fisherman. He is coauthor of *Frank Furness: The Complete Works* (1991, 1996), and *Drawing Toward Building: Philadelphia Architectural Graphics, 1732-1986* (1986).

Sponsors

On behalf of the Council and Staff, the editors gratefully acknowledge those friends and neighbors whose financial contributions helped make possible this special issue of *PMHB* celebrating the 175th anniversary of the Historical Society of Pennsylvania.

Alexander Inn
Joseph F. Baker
Joyce and Joseph Brazino
Alan and Deborah Caznoff
Creative Copies:
 Printing and Graphics
Crusader Bank
DoubleTree Hotel
East of Broad Improvement
 Association
Henry Parrish Hackett
Holiday Inn Express Midtown
Georgine and Jack Kelly
Henry and Rosanne Kozlow

Eugene B. Lefevre
Lenox Apartments, Inc.
Thomas F. Lyon
Philadelphia Management
Philadelphia Marriott Hotel
The New Century Trust
Patriot Parking, Inc.
Pennsylvania Convention Center
Preservation Alliance for Greater
 Philadelphia
12th Street Gym
Uniquely Philadelphia, Inc.
Woody's Bar & Restaurant