

HISTORYCENTER



Charles Uhl

TELLING THE STORY OF A GREAT AMERICAN REGION

Looking south to the History Center; the museum addition is to the right.

With the opening of its new Smithsonian wing on November 13, the Senator John Heinz Pittsburgh Regional History Center tells the tale of our region like never before. With five floors of museum and educational space, Pittsburgh's story is, literally, bigger than ever.

The new wing completes the History Center as conceived nearly a decade ago, when planning for the facility began.

Stage one, which opened in 1996, was the renovation of the old Chautauqua Lake Ice Co. building at 12th and Smallman streets in the Strip District. It accommodates a state-of-the-art Library & Archives, museum exhibition space, and offices for educational programming and administration.

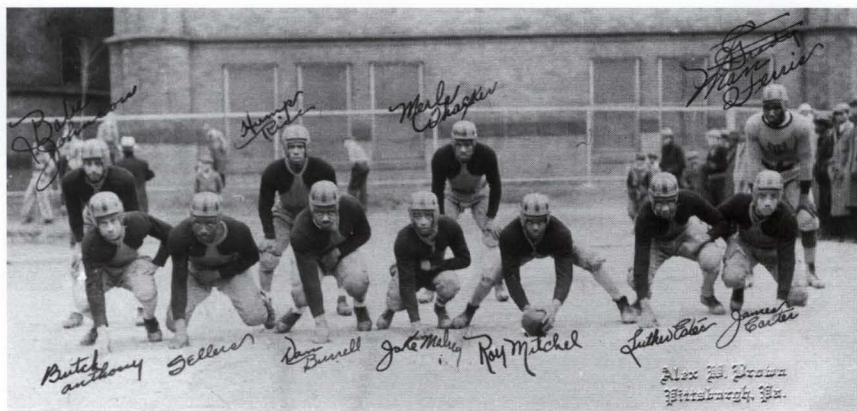
Stage two provides a gallery for changing exhibits from the Smithsonian Institution – a strategic partnership forged five years ago – and a Special Collections Gallery to show off thousands of intriguing artifacts that reveal the rich texture of the region's ethnic neighborhoods. An Education Center will allow the History Center to present innovative educational programming on a larger scale and increase opportunities for earned income through facility rentals. The Sports Museum will tell the story of Pittsburghers who became champions and champions who became Pittsburghers – legends of the unforgettable and almost forgotten.

In completing the new Smithsonian wing, the History Center's curators, educators, researchers, and project managers have done an extraordinary job, creating in-depth, hands-on, one-of-a-kind experiences for our visitors. Whether you are an avid sports fan, a connoisseur of ethnic heritage, a history buff seeking to enjoy our nation's top traveling exhibits, or someone who simply wants to learn more about this great region, the History Center is the place to be.

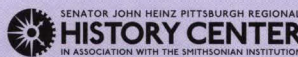
This year marks the Historical Society of Western Pennsylvania's 125th anniversary. Thanks to your support, we've come a long way since 1879!

Andrew E. Masich
President & CEO
Senator John Heinz Pittsburgh Regional History Center

The 1931
Garfield Eagles.



Courtesy Rob Ruck and Ray Irvin



FALL 2004 EXHIBITS AT THE HISTORY CENTER

SEPTEMBER 11: BEARING WITNESS TO HISTORY

THROUGH JANUARY 2, 2005

REDISCOVERING LEWIS & CLARK A JOURNEY WITH THE ROONEY FAMILY

THROUGH JANUARY 2005

THE YEAR IN PICTURES IMAGES FROM THE PITTSBURGH POST-GAZETTE

THROUGH DECEMBER 2004

SPECIAL COLLECTIONS GALLERY

OPENING NOVEMBER 13, 2004

WESTERN PENNSYLVANIA SPORTS MUSEUM

OPENING NOVEMBER 13, 2004

ONGOING EXHIBITS

KIDSBURGH

POINTS IN TIME

BUILDING A LIFE IN WESTERN PENNSYLVANIA, 1750 – TODAY

DISCOVERY PLACE

PRINE COLLECTION OF WOODWORKING PLANES

GLASS: SHATTERING NOTIONS

HEINZ 57

WROUGHT METAL TREASURES FROM THE BLUM COLLECTION



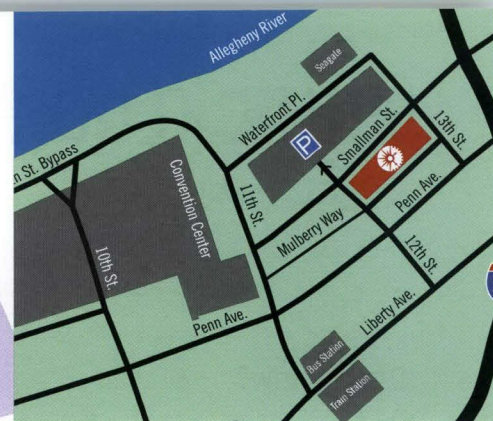
Smithsonian
Institution



The Smithsonian Institution has a wealth of sports information and memorabilia. Parts of the collection can now be found online.

<http://www.si.edu/resource/faq/nmah/sports.htm>

Program from Major League Baseball
tour of Japan, 1931.



HISTORYCENTER INFORMATION

1212 SMALLMAN STREET in the Strip District
(412) 454-6000

www.pghhistory.org

PARKING FOR HISTORY CENTER VISITORS

10 a.m. – 1 p.m. \$3, after 1 p.m. no charge

HOURS

Museum and Shop: 10 a.m. to 5 p.m., daily.
Library & Archives: 10 a.m. to 5 p.m.,

Thursday through Saturday.

Center closed on Easter, Thanksgiving, Christmas,
and New Year's Day.

Wheelchair accessible.

Café on site.

Discovery Place and Kidsburgh for children.

ADMISSION

Adults: \$7.50; Seniors 62 yrs+: \$6.00;
College students w/ID: \$5.00; Children 6-18 yrs: \$3.50;
Children 5 and under: free

Field trip groups: \$5.00/student; Tour groups (adults):
\$6.50/person

Members: free

GROUP SALES

Discounted rates, advance booking required.
Call (412) 454-6304.

MUSEUM SHOP

History-related gifts and souvenirs. Members enjoy a 10%
discount.

FACILITY RENTAL

Your special event or wedding is a historic occasion.
A timeless and distinctive setting, with superb dining
provided by Common Plea Catering, the History Center
is the perfect place to host your next banquet, party,
reception, seminar, or meeting.

Call (412) 454-6435 for information and reservations.



Meadowcroft
Museum of Rural Life

Meadowcroft Museum of Rural Life (less
than an hour west of Pittsburgh near the
West Virginia border) is a museum of the
Historical Society of Western Pennsylvania.
It contains a 19th century village and
internationally-known archaeological dig
at its Rockshelter site.

HOURS

Memorial Day – Labor Day: Wed. – Sat.,
Noon – 5 p.m.; Sun., 1 – 5 p.m.

May, September, October:

Sat., Noon – 5 p.m.; Sun., 1 – 5 p.m.

ADMISSION

\$6.50 adult, \$3.50 age 6 – 16 for each
the Village and Rockshelter,
or \$10 adult, \$5 children to visit both.

