

WESTERN PENNSYLVANIA

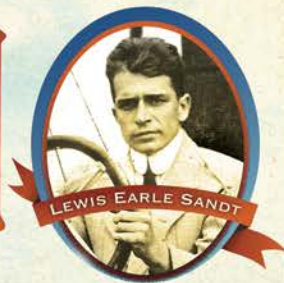
HISTORY

FALL 2013

WESTERN PENNSYLVANIA HISTORY
FALL 2013



Lewis Earle Sandt BROOKVILLE'S BIRDMAN



ALSO: Cement City AND Pittsburgh's Dance Band Era

Service. Innovation. Expertise.

Heeter is the service leader among single-source providers of complex print, mail & fulfillment and interactive to the casino, healthcare, pharmaceutical and retail industries.



441 Technology Drive • Canonsburg PA 15317 • 800-379-5003 • www.heeter.com

CHAIRMAN, BOARD OF DIRECTORS

Robert J. Cindrich

PRESIDENT & CEO

Andrew E. Masich

SENIOR VICE PRESIDENT

Betty Arenth

EDITOR

Brian Butko

ASSISTANT EDITOR

Kelly A. Gregg

DESIGN

Quest Fore

PRINTING

Heeter Direct


**SENATOR JOHN HEINZ
HISTORY CENTER**

IN ASSOCIATION WITH THE SMITHSONIAN INSTITUTION

Western Pennsylvania History (ISSN 1525-4755) is published quarterly as a benefit of membership in the Senator John Heinz History Center (legal name: Historical Society of Western Pennsylvania), 1212 Smallman Street, Pittsburgh, PA 15222-4200. © 2013. See inside back cover for membership information. Institutional subscription: \$40; international, \$50.

POSTMASTER: Send address changes to Development, Heinz History Center, 1212 Smallman Street, Pittsburgh, PA 15222-4200. USPS 679-200. Periodicals Postage Paid at Pittsburgh, PA.

This publication is made possible, in part, by the Kenneth B. and Verna H. Haas Bequest. A portion of the History Center's general operating funds is provided by the Allegheny Regional Asset District and the Pennsylvania Historical and Museum Commission.

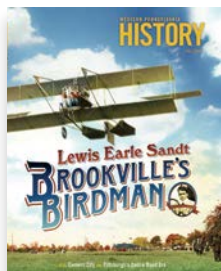
Editorial questions: babutko@heinzhistorycenter.org or (412) 454-6331.

Membership questions: membership@heinzhistorycenter.org or (412) 454-6436.

Back issues, additional copies: estore@heinzhistorycenter.org or (412) 454-6300.



Allegheny Regional Asset District


**Smithsonian Institution
Affiliations Program**


The Birdman of Brookville, Lewis Earle Sandt, amazed the crowds with his high-flying feats at Waldameer Park, Erie, in 1912. Sandt was a pioneer in the field of early aviation, and his daring earned him a place in Western Pennsylvania's flight heritage.

David L. Taylor.



Western Pennsylvania History is printed on paper containing fiber from well managed, independently certified forests, and printed with vegetable based inks. The Forest Stewardship Council (FSC) is a nongovernmental, non-profit organization that promotes the responsible management of the world's forests.



FEATURES

18

**LEWIS EARLE SANDT:
BROOKVILLE'S BIRDMAN**

By Carole A. Briggs

34

CEMENT CITY

By Brian Charlton

46

PITTSBURGH'S DANCE BAND ERA

By Paul Roth with Patricia Finkel

34


 SWING & SWAY
with
SANDY KATE

 18 East 48th Street
New York, N.Y. 10017
(212) 688-6230

CONTENTS

FALL 2013 | VOLUME 96 | NUMBER 3

DEPARTMENTS

2

EXHIBITS

3

PRESIDENT'S MESSAGE

4

UP FRONT
FORT PITT

Andrew Gaerte

**WESTERN PENNSYLVANIA
SPORTS MUSEUM**

Anne Madarasz

LIBRARY & ARCHIVES TREASURES

Matthew Strauss

ARCHITECTURE AROUND US

Lu Donnelly

NEIGHBORHOOD STORIES

Bette McDevitt

CURATOR'S CORNER

Emily Ruby

59

LEGACIES

60

BOOK REVIEWS

64

INFORMATION

18



46

