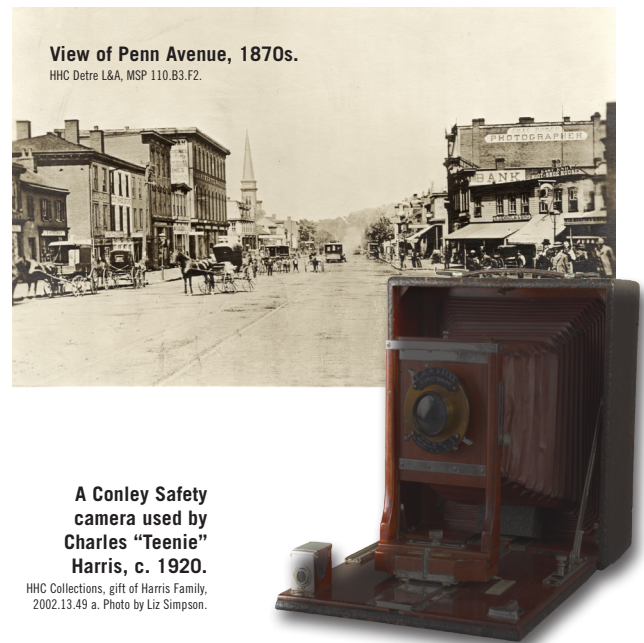


EXHIBITS

#Pitxburgh: A Photographic Experience

Opens December 17, 2016

Visitors will be transported back in time in this interactive exhibition using newly unearthed images from the History Center's vast collection of photographs. Explore the region's history starting with the advent of photography in the 1840s and discover how technologies have changed but motivations for taking and sharing images have remained the same. Compare subjects from different time periods, from dogs to disaster images, and explore Pittsburgh's cycles of change and renewal. Exhibit interactives will allow visitors to "time travel" by placing them in historic photos and encouraging them to sharpen their visual detective skills to determine the date of photos. *#Pitxburgh* is a compelling glimpse into Pittsburgh's past that shows how people illustrate their own lives in a format that is still widely embraced today.



Fall 2016 — Ongoing Exhibits



A Reactable table will be a key feature of *Discovery Place*, encouraging visitors to test and explore sound generation and music in a new way.

Reactable Systems S.L.

Discovery Place

Discovery Place infuses hands-on activities with historical content to inspire a new generation of innovators and allows visitors to leave the space with a better understanding of how ideas become real-world innovations.

Pittsburgh: A Tradition of Innovation

Visible Storage

Sigo Falk Collections Center

From Slavery to Freedom

Explore 250 years of African American history in Pennsylvania

Western Pennsylvania Sports Museum

Heinz

Special Collections Gallery

Treasures that celebrate our ethnicity, industry, innovation, and lifestyle.

Glass: Shattering Notions

Rediscovering Lewis & Clark:

A Journey with the Rooney Family

Prine Collection

of Woodworking Planes

Wrought Metal Treasures

from the Blum Collection

Clash of Empires:

The British, French & Indian War, 1754-1763

Expressions: Photographs From the Pittsburgh Post-Gazette

Features 75 photos from the past year, including the work of more than a dozen photographers

At Fort Pitt Museum:

Captured by Indians: Warfare & Assimilation on the 18th Century Frontier

Closes October 2, 2016

At Meadowcroft Rockshelter and Historic Village:

Closes for the season October 30, 2016