

**CHAIR, BOARD OF TRUSTEES**  
Diane P. Holder

**PRESIDENT & CEO**  
Andrew E. Masich, PhD

**EDITOR**  
Brian Butko

**ASSISTANT EDITOR**  
Liz Simpson

**INTERN**  
Julia Snyder

**DESIGN**  
Gatesman

**PRINTING**  
Heeter



*Western Pennsylvania History* (ISSN 1525-4755) is published quarterly as a benefit of membership in the Senator John Heinz History Center (legal name: Historical Society of Western Pennsylvania), 1212 Smallman Street, Pittsburgh, PA 15222-4200. © 2018. See inside back cover for membership information. Institutional subscription: \$40; international, \$50.

**POSTMASTER:** Send address changes to Development, Heinz History Center, 1212 Smallman Street, Pittsburgh, PA 15222-4200. USPS 679-200. Periodicals Postage Paid at Pittsburgh, PA.

This publication is made possible, in part, by the Kenneth B. and Verna H. Haas Bequest. A portion of the History Center's general operating funds is provided by the Allegheny Regional Asset District and the Pennsylvania Historical and Museum Commission.

Editorial questions: [babutko@heinzhistorycenter.org](mailto:babutko@heinzhistorycenter.org) or (412) 454-6331.

Membership questions: [membership@heinzhistorycenter.org](mailto:membership@heinzhistorycenter.org) or (412) 454-6436.

Back issues, additional copies: [estore@heinzhistorycenter.org](mailto:estore@heinzhistorycenter.org) or (412) 454-6300.



Smithsonian Institution  
Affiliations Program



# CONTENTS

SUMMER 2018 • VOLUME 101 • NUMBER 2

## DEPARTMENTS

12



### 12 NEIGHBORHOOD STORIES Deutschtown

Bette McDevitt

### 14 CURATOR'S CORNER Look for the Helpers

Emily Ruby

### 16 AFRICAN AMERICAN COLLECTION The Legacy of the Rose Family Exposed in a New Book

Samuel W. Black

2

### Exhibits

3

### PRESIDENT'S MESSAGE

4

### UP FRONT

#### 4 FORT PITT Liberty and Sovereignty: The 1778 Treaty with the Delaware Nation Mike Burke

#### 6 WESTERN PENNSYLVANIA SPORTS MUSEUM Pysanky on Ice Anne Madarasz

#### 8 LIBRARY & ARCHIVES "A community for ourselves" — Bet Tikvah Congregation Records Eric Lidji

#### 10 ARCHITECTURE AROUND US Two Centuries and Beyond at the Century Inn Angelique Bamberg

14



## FEATURES



### THE RISE & DECLINE OF WOMEN IN THE PITTSBURGH BUREAU OF POLICE

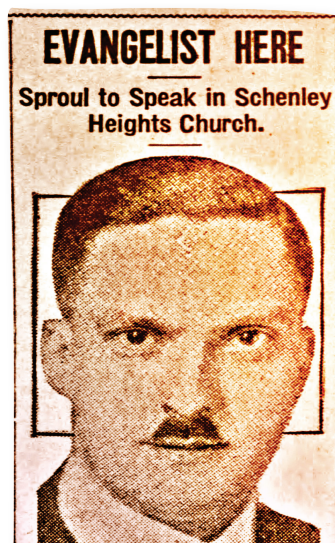
By Patricia Ulbrich and Sarina Johnston

20

### THE “GLORY BARN” HITTING THE SAW DUST TRAIL IN PITTSBURGH

By Richard Gazarik

36



### LLOYD GIBSON’S WWI PAPER TRAIL

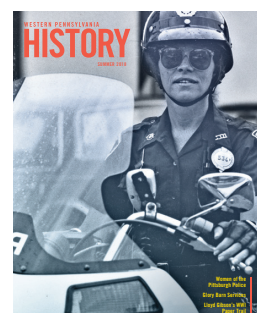
By Diana Ames

46



58  
BOOK REVIEWS

60  
INFORMATION



Officer Regina Martin became  
the first female motorcycle  
officer on the Pittsburgh  
Police force in 1984.

HHC Detre L&A, Pittsburgh Police Historical  
Assn. Collection, 1878-2008, MSS 858.B49.F8.I2.

