

EXHIBITS

Smithsonian's Portraits of Pittsburgh: Works from the National Portrait Gallery

Now open through October 4

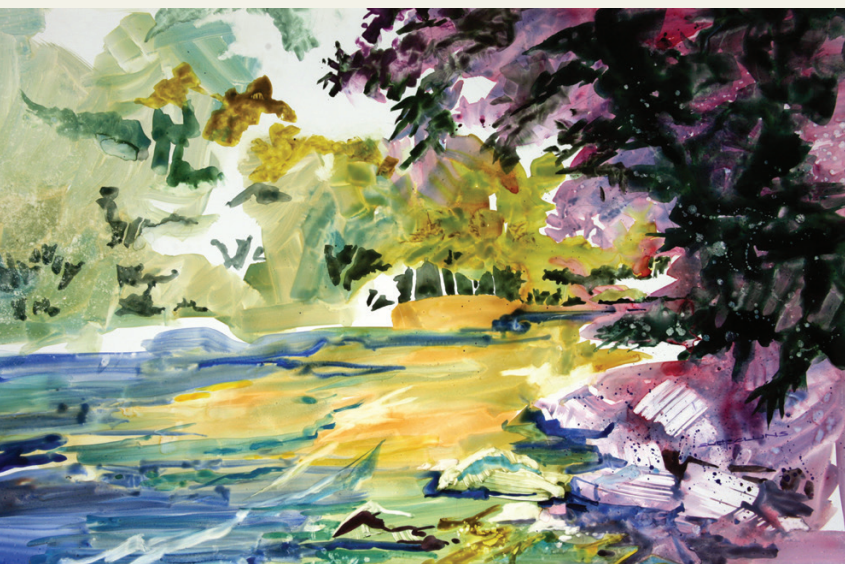
Nearly 60 works of art from the Smithsonian's National Portrait Gallery are on exhibit as part of *Smithsonian's Portraits of Pittsburgh: Works from the National Portrait Gallery*. The exhibit features original paintings, sketches, photographs, and prints that showcase more than 100 people who exemplify the innovations, challenges, and motivations that have shaped this region and our nation. Visit heinzhistorycenter.org/portraits for more information.



Andrew William Mellon by Sir Oswald Hornby Joseph Birley, oil on canvas, 1923.

Smithsonian Institution, National Portrait Gallery, gift of Paul Mellon.

Spring 2020 — Ongoing Exhibits



Loyalhanna Lovely by Susan Pollins, watercolor on Yupo paper, 2017.

Pittsburgh: A Tradition of Innovation

Visible Storage

A behind-the-scenes look at the museum's collection.

From Slavery to Freedom

Explore 250 years of African American history in Pennsylvania.

Western Pennsylvania Sports Museum

Glass: Shattering Notions

Rediscovering Lewis & Clark:

A Journey with the Rooney Family

Prine Collection

of Woodworking Planes

Wrought Metal Treasures

from the Blum Collection

Clash of Empires:

The British, French & Indian War, 1754-1763

Master Visual Artists VII: Preserving the Legacy

Barensfeld Gallery, through September 13, 2020

The seventh such show since the initial MVA exhibit, *70+ and Still Working*, premiered in 1991, this legacy exhibit features the work of 11 exceptional regional artists. A video documents and preserves the life stories of each artist, who work in a variety of mediums: painting, drawing, sculpture, ceramics, fiber art, and multimedia.

Artists:

Rochelle Blumenfeld	Joan Iversen Goswell	Mary Weidner
Robert L. Bowden	Dale Huffman	Patricia Kennedy-Zafred
Richard Claraval	Kevin O'Toole	Ruth G. Richardson
Sylvester Damianos	Susan E. Laansma Pollins	

At Meadowcroft Rockshelter and Historic Village:

Opening for the season on May 2

At the Fort Pitt Museum:

Pittsburgh, Virginia: A Tale of the Ohio Country Frontier